

A Signal Injection Attack Against Zero Involvement Pairing and Authentication for the Internet of Things

Isaac Ahlgren

Department of Computer Science
Loyola University Chicago, USA
iahlgren@luc.edu

Jack West

Department of Computer Science
University of Wisconsin–Madison, USA
jwwest@wisc.edu

Kyuin Lee

Department of Information Science Technology
University of Houston, USA
klee48@central.uh.edu

George Thiruvathukal

Department of Computer Science
Loyola University Chicago, USA
gkt@cs.luc.edu

Neil Klingensmith

Department of Computer Science
Loyola University Chicago, USA
neil@cs.luc.edu

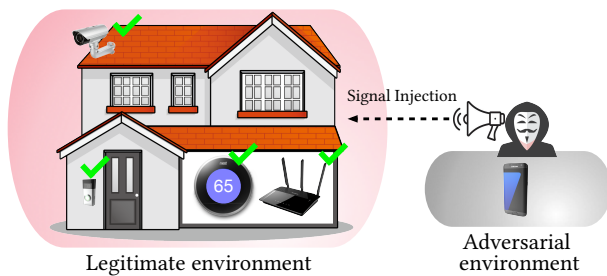


Fig. 1: Legitimate devices within the same environment authenticate. External adversary authenticates by injecting a predictable signal into the legitimate environment.

Abstract—Zero Involvement Pairing and Authentication (ZIPA) is a promising technique for autoprovisioning large networks of Internet-of-Things (IoT) devices. In this work, we present the first successful signal injection attack on a ZIPA system. Most existing ZIPA systems assume there is a negligible amount of influence from the unsecured outside space on the secured inside space. In reality, environmental signals do leak from adjacent unsecured spaces and influence the environment of the secured space. Our attack takes advantage of this fact to perform a signal injection attack on the popular Schurmann & Sigg algorithm. The keys generated by the adversary with a signal injection attack at 95 dBA is within the standard error of the legitimate device.

Index Terms—Internet of Things (IoT), Cybersecurity, Zero Involvement Pairing and Authentication

I. INTRODUCTION

Internet of Things (IoT) devices require secure wireless communication channels to exchange data and coordinate with one another. Without secured channels, IoT devices are susceptible to attacks such as man-in-the-middle [7], [9] which jeopardize user privacy and trustworthiness of IoT devices. To establish a secured channel, IoT devices must pair and establish a common cryptographic key.

Traditionally, IoT devices in a network individually pair with a central entity (such as a gateway or hub) that is assumed to be trusted. This is usually done through a person intervening to type in a password. However, human-mediated pairing is prone to many faults, particularly for IoT devices.

Passwords are a point of weakness for authentication systems in general but are particularly problematic for IoT devices. IoT devices lack the peripherals such as a keyboard and mouse that facilitate password entry on other device classes like mobile phones, tablets,

and laptops. Furthermore, generating strong passwords, storing them securely, and periodically rotating them have all proven to be stubbornly difficult tasks for humans [23], [25], [6], [27], [8]. Thus, readily changing or updating passwords for IoT devices is tedious for users to do. Rotating passwords on a large network of IoT devices means manually re-pairing every device by hand. As a result, networks of IoT devices tend to be difficult to manage at scales beyond a handful of devices.

A central entity also presents unique problems for IoT devices. Central hubs like WiFi access points or data concentrators can suffer temporary or permanent failure due to a malfunction during normal operations, leaving devices with no way to communicate with each other [18]. Since IoT devices are often unattended (as opposed to laptops, which have dedicated users), outages can go unnoticed for long periods of time, leading to extended service interruptions. A trusted central entity can also be compromised as a result of software vulnerabilities [26], [5].

As a solution to these issues, zero involvement pairing and authentication (ZIPA) aims to alleviate the need for human intervention and central entities by allowing devices to establish secure decentralized networks. ZIPA is desirable because (1) it is always-on, (2) it is easily scalable (easy to add devices to network), and (3) it is adaptable to support mutual automatic pairing among devices from different vendors.

Devices authenticating to a ZIPA network validate their legitimacy by proving that they are located in the same physical space (i.e., office, home) at the same time. The devices generate authentication keys from ambient environmental contexts such as electromagnetic radiation, audio, voltage, etc, which are chosen to be observable only within the confines of a protected physical space. Compared to traditional pairing methods, ZIPA is more secure and easier to use. Because the devices autonomously authenticate themselves, the user does not have to manage, remember or enter the password on individual devices. This enhanced usability also improves the system's overall security because it allows the constituent devices to autonomously and periodically rotate keys.

However, all ZIPA schemes that we are aware of assume that there is a negligible amount of influence from the environment outside the secured space [19], [13], [10], [12], [11], [21]. In reality, most spaces are not impenetrable. Environmental signals do leak from the surrounding adjacent unsecured spaces and influence the secured space's context. Adversaries can influence the keys that ZIPA devices generate by injecting a strong known signal into the secured space

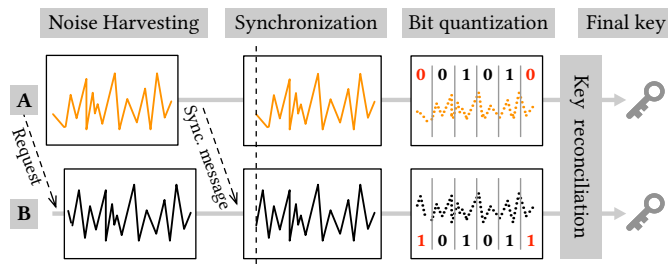


Fig. 2: General pipeline of ZIPA between two authenticating devices: A and B .

from outside (depicted in Figure 1). This type of attack is known as a *signal injection attack*.

In this work, we introduce signal injection attacks on the Schurmann & Sigg algorithm [21], which is commonly used in ZIPA systems [15], [17]. Schurmann & Sigg generates keys from ambient audio, which is easy to work with in a proof-of-concept system. While we are focusing on signal injections using audio, we think that signal injection attacks can work on many different modes of signals.

Our attack is straightforward for an adversary to carry out. Equipped with only a microphone, speaker, and laptop, the adversary sits just outside the legitimate space and broadcasts the signal toward the legitimate ZIPA devices. The adversary then masquerades as a legitimate ZIPA device and attempts to pair.

Our attack has a high success rate for the adversary. Keys generated by honest devices inside the legitimate space are heavily influenced by the injected signal.

Our contributions include:

- We introduce a signal injection attack on the Schurmann & Sigg algorithm that exploits the weak barriers of the room to inject a signal. **To our knowledge, this is the first successful signal injection attack on a ZIPA system.**
- We evaluate our signal injection attack on a testbed in our department’s offices. The bit error rate of our attack’s adversarial keys are **within standard error of legitimate keys.**
- We suggest a mitigation for our signal injection attack. We leave the implementation of our mitigation to future work.

II. BACKGROUND & RELATED WORK

ZIPA systems assume that devices located within the same environment (i.e., home, office) are legitimate and any devices outside of such environment is considered as an adversary, as depicted in Figure 1. The physical space can be protected by conventional barriers like keycards or locks, and devices inside derive their legitimacy from being able to prove that they are nearby one another inside one of these protected areas.

A. ZIPA Pipeline Overview

ZIPA authentication between two devices (A and B) generally involve four stages: noise harvesting, synchronization, bit quantization, and key reconciliation as illustrated in Figure 2.

- 1) **Noise Harvesting:** Two devices independently measure a sequence of samples from an environmental signal source. This is usually done by a microcontroller with an on-board analog-to-digital converter or other sensors.
- 2) **Synchronization:** Two devices time-align their signal measurements with one another. One device sends a short snippet of the measurement results (synchronization message) to the second device

over a public unsecured channel. The second device shifts the synchronization message over its own measured signal to obtain an identical starting point by searching for maximized Pearson correlation coefficient.

3) **Bit quantization:** Both devices independently convert the synchronized signal into a bit sequences to be later used as a key.

4) **Key Reconciliation:** The two devices exchange messages with one another over a public channel to resolve bit differences in their quantized bit sequences.

1) *Schurmann & Sigg Bit Quantization:* Our attack targets the popular Schurmann and Sigg bit quantization algorithm, which generates a sequence of bits from a time series of environmental sensor readings (step 3 in the sequence above). The steps to generate a bit sequence are illustrated in Figure 3.

- 1) First, the algorithm builds a spectrogram from the time series samples of the environmental signal.
- 2) The spectrogram is divided into a grid by frequency and time. The algorithm computes the energy of each cell in the spectrogram’s grid, assembling this results in a matrix (denoted by E).
- 3) The bit quantization algorithm used to generate the keys for the Schurmann and Sigg algorithm utilizes the difference in energy between frequency bands in the spectrogram. The bit quantization is described as:

$$f(E) = \begin{cases} 1 & (E_{ij} - E_{i,j+1} - (E_{i-1,j} - E_{i-1,j+1})) > 0 \\ 0 & \text{otherwise} \end{cases} \quad (1)$$

where E is the energy matrix of the spectrogram, i represents the index for the frame, and j represents the index for the frequency band.

B. Related Work

Our work focuses on the on stronger adversarial attacks on ZIPA systems. Most ZIPA systems assume a weaker adversary for their threat model and thus perform weaker attacks on their systems. Generally, threat models from prior work can be categorized in two ways: a passive adversary and a passive-active adversary.

For passive adversary threat model, the adversary watches and observes the context coming from the secured space from an unsecured space. Typically, its assumed that an adversary only has access to the context observed from the unsecured space and does not try to actively try to manipulate the authentication process [16], [20], [14].

For the passive-active threat model, the adversary attempts to actively manipulate the authentication process through attacks such as replay attacks and machine learning attacks [12], [10]. A replay attack is where an adversary records the environmental context at an earlier time and replays it at a later time to masquerade as a legitimate device. The SoundDanger attack [22], the attacker induces a sound in the legitimate space, for example by sending a text message or making a phone call that causes a device to produce a known sound. A machine learning attack is where a machine learning model is trained on environmental context collected at an earlier time to predict the environmental context later. These threat models assume a stronger adversary, however this adversary is still unmotivated and weaker compared to our attack.

AeroKey [12] is the only ZIPA system we know of that attempts a signal injection attack. However, their signal injection attack was unsuccessful. This could be due to a low injection signal intensity that cannot overwhelm the barriers of the secured space. Also, the type of signal injected in AeroKey may not have been a good fit for the system’s bit quantization algorithm.

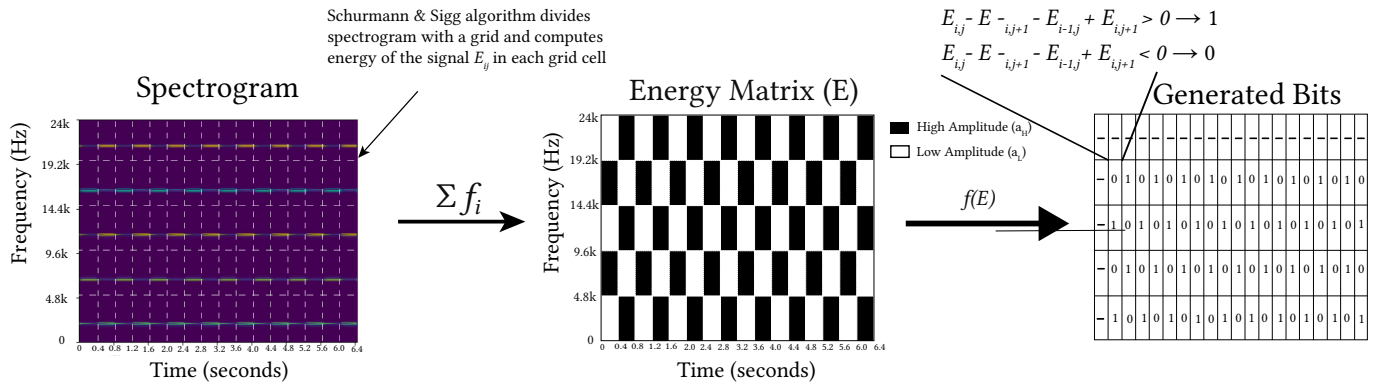


Fig. 3: Overview of our attack on the Sigg algorithm. The spectrogram (left) is divided in a grid. The energy of each box in the grid is computed to build an energy matrix E . Bits are computed as a function of nearby cells on E .

C. Threat Model

We assume that legitimate devices are all located inside some physically-secured space such as an office, house, or apartment. We call this space the legitimate environment. Individual devices may have limited computation power—IoT devices, mobile phones, or bluetooth accessories all have microcontrollers or low-power CPUs.

Adversaries are restricted from the physically-secured space, but they may have access to adjacent rooms like hallways or neighboring apartments. These neighboring spaces are the adversarial environment. They can intercept all public (unsecured) wireless transmissions made by the legitimate devices inside the legitimate environment. Although they do not have access to the same ambient environmental signals inside the space, they can measure the environmental context nearby, which is only slightly different from the contexts of legitimate environment as illustrated in Figure 1. Adversaries can also masquerade as legitimate devices by initiating authentication. Additionally, although the legitimate device’s computation power may be limited, we assume the adversary has much more computation power at its disposal (eg. GPUs).

The adversary’s goal is to gain access to the network of legitimate devices either by (a) passively listening to wireless communications and environmental signal to learn their shared key or by (b) actively masquerading and participating in the protocol as a legitimate device. To learn the shared key, the adversary passively snoops the public wireless channel for messages exchanged by legitimate devices. The information it learns by listening to the channel may be used to form an estimate of the key. In the masquerading strategy, the adversary impersonates a legitimate device, acquiring measurements of ambient environmental signals and following the protocol to establish a key. Using a combination of imperfect measurements of the environmental signal and messages exchanged with legitimate devices, the adversary negotiates a key and joins the network

III. SIGNAL INJECTION ATTACKS

In an ideal setting, legitimate devices on a ZIPA network are isolated from external adversaries by a barrier that does not allow environmental signals to pass. A locked soundproof room, for example, could perfectly isolate audio from the outside world. Malicious devices outside the isolated room cannot hear the environmental context inside, and they cannot influence the environmental context inside. Without access to the environmental context, outside devices cannot generate a valid key. The threat model of existing ZIPA systems presumes near-perfect isolation [12], [14], [16], [21], [10].

In reality, the boundaries that separate physical spaces are much more porous to environmental noise. Many of us have experienced loud noises coming from outside a building that are audible inside a room. Other forms of environmental context like electromagnetic radiation, ambient light, and others can analogously be influenced from the outside. Our evaluation confirms that environmental context is detectable outside the enclosed legitimate space.

Our signal injection attack takes advantage of the imperfect barrier between the enclosed legitimate environment and the outside world. We ask the question: *is it possible for an external adversary to broadcast a signal from outside the legitimate environment that causes legitimate ZIPA devices to produce a known key?*

If so, an adversary can control the key generation process and gain unauthorized access to a ZIPA network. In this section, we describe a signal injection attack for the popular Schurmann and Sigg bit quantization algorithm using audio as a source of environmental context. We demonstrate both a simulated and live signal injection attack on the Schurmann & Sigg algorithm.

A. Description of Our Signal Injection Attack

To experiment with signal injection attacks, we set up a ZIPA testbed depicted in Figure 5. Inside the legitimate space, we placed a legitimate ZIPA device next to a television playing a video for environmental context. Outside the legitimate space, we placed a second ZIPA device along with a speaker to generate an artificial signal that overwhelms the legitimate context from the TV.

Our artificial injection signal is engineered to produce a predictable key when used as input to the Schurmann & Sigg bit quantization algorithm. The injection signal sufficiently overwhelms the context in the legitimate space, and an adversary can break the key with relative ease. The challenge is to decide what signal we should inject to induce a desired key.

B. Signal Injection Attack on the Schurmann and Sigg Algorithm

The Schurmann and Sigg bit quantization algorithm (§II-A1) produces bits based on the energy differences of adjoining frequency bands in a spectrogram, as depicted in Figure 4. The algorithm divides the spectrogram with a grid of divisions in frequency and time. It then compares the energy of adjacent rectangles in the grid, assigning bits according to Equation (1). We want to design an injection signal that induces the quantization algorithm to generate a predictable pattern of 1’s and 0’s.

- **Inducing 1’s:** We can induce a **positive** value for ϵ by setting the dark squares to have **large** positive energy values a_H while the

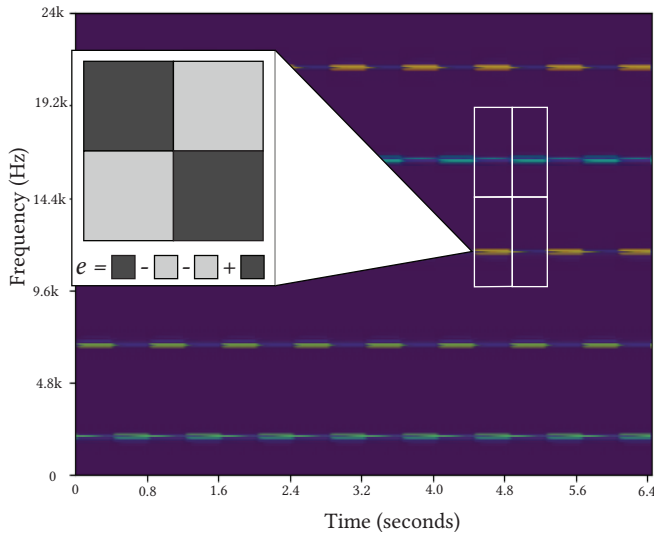


Fig. 4: Spectrogram of our injection signal with a blown up view of the Schurmann & Sigg grid that shows how elements of the energy matrix are computed from the spectrogram.

light squares have **small** or zero energy a_L . The Schurmann and Sigg algorithm computes:

$$e = a_H - a_L - a_L + a_H \quad (2)$$

Choosing $a_L = 0$ forces e to be positive:

$$e = a_H - 0 - 0 + a_H = 2a_H > 0$$

And bit quantization produces a 1 for positive values of e .

- **Inducing 0's:** We can induce a **negative** value for e by setting the dark squares to have **small** or zero energy values a_L while the light squares have **large** positive energy values a_H : The Schurmann and Sigg algorithm computes:

$$e = a_L - a_H - a_H + a_L = 0 - a_H - a_H + 0 = -2a_H < 0$$

The Schurmann and Sigg algorithm produces a 0 for negative values of e .

We build our injection signal by creating a spectrogram that has tiled checkerboard of high-energy (dark) and low-energy (light) rectangles. High-energy rectangles have a high-amplitude sine wave. Low-energy rectangles have no signal.

IV. EVALUATION

We evaluated our injection attack in a testbed of ZIPA devices located in our department's offices. The environment for the experiment is depicted in Figure 5.

In our testbed, there are two legitimate devices inside of a secured space and one adversarial device in a publicly-accessible hallway immediately outside. All devices are using a HyperX SoloCast USB microphone [2] to record audio at a sampling rate of 48kHz. The adversarial device uses a Samsung HW-J355 soundbar [1] as a speaker to inject the injection signal into the secured space. The injection signal was evaluated using two methods: a simulation and a real testbed. The simulation evaluated the injection signal in perfect signal propagation conditions. The testbed evaluated the injection signal in real life signal propagation conditions.

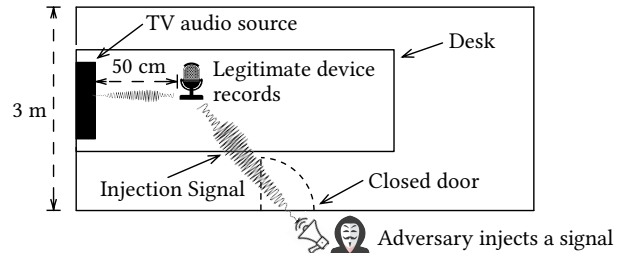


Fig. 5: Illustration of the testbed we used to carry out our injection. Adversary sits outside an office with the door closed and broadcasts the injection signal into the legitimate space. Legitimate device inside the office pairs with adversary.

For both methods, we played a YouTube video¹ on a TV in our testbed to simulate conversation in the room. We synchronously recorded audio inside the room and outside the room for approximately 30 minutes. For the simulation, we superimposed our injection signal onto the environmental context by adding the two signals together in software. For the testbed, a signal was injected by the adversary using a speaker in which the signal's intensity varied over consecutive trials of the experiment. Since the simulation does not experience distortion from a real environment, it is a good approximation of the best performance our attack can achieve under ideal conditions.

A. Signal Injection Influence

The effectiveness of our signal injection attack is illustrated in Figure 6.

Without issues of signal propagation in the simulation, the attack generated keys within an average of $\sim 7\%$ bit error rate of the keys generated within the secured space. This is only slightly better than the bit error rate of the keys generated by devices within the secured space at an average bit error rate of $\sim 11\%$.

On the testbed, a signal injection attack at 95 dBA had an average bit error rate of $\sim 20\%$. The signal injection attack at 85 dBA had an average bit error rate of $\sim 27\%$. The signal injection attack at 70 dBA had an average bit error rate of $\sim 35\%$. The signal injection attack at 50 dBA had a similar effect to no injection signal at all as it had an average bit error rate of $\sim 44\%$ while no injection attack had an average bit error rate of $\sim 46\%$. The intensity of the injection signal scales directly proportional to the decreased bit error rate. Hence, we can conclude that a higher intensity signal can decrease the bit error rate even more so.

B. Injection Signal Phase

In general, ZIPA bit quantization algorithms tend to perform well only when they generate keys from time-aligned buffers. A pair of legitimate ZIPA devices must synchronize their sample buffers to ensure the bit quantization algorithms produce the same bit sequence from their measurements of environmental context.

Our injection attack superimposes an artificial signal over the legitimate space's environmental context. The attack works best when the sine waves of the injected signal's spectrogram are perfectly aligned with the Schurmann & Sigg grid, as depicted in Figure 7(a). If the injection signal is out of phase with the legitimate device's grid (as in Figure 7 (b)), some energy from dark squares in Figure 4 will bleed into the light squares. This can cause the calculation of e in

¹<https://youtu.be/HeQX2HjkcNo?si=bqW6vsmvvnv2flsCh>

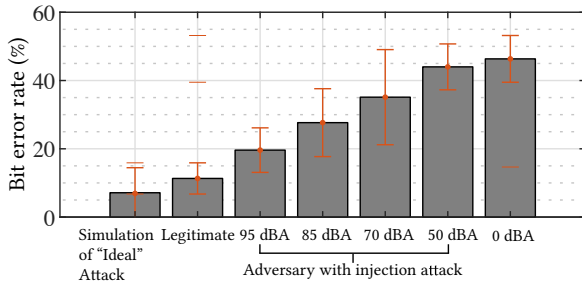


Fig. 6: Comparison of bit error rates of keys generated by a pair of legitimate devices and adversary (lower is better). Adversary using injection attack at high volume achieves nearly the same bit agreement rate as legitimate device.

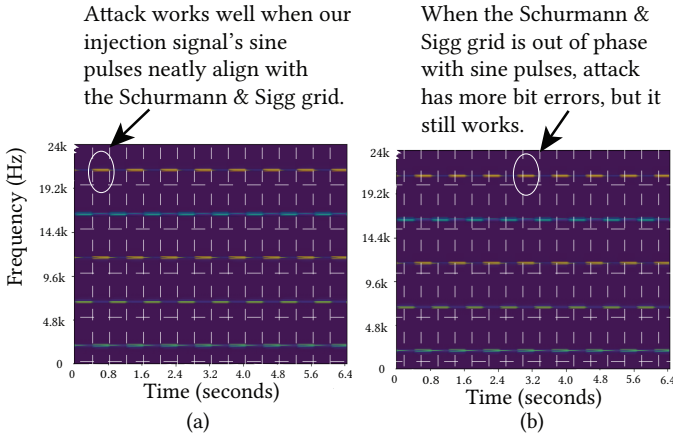


Fig. 7: Phase alignment of our injection signal with the Schurmann & Sigg grid.

Equation (2) to be less than $2a_H$, which makes the injected signal less reliable at producing 1's and 0's in a predictable sequence.

We tested the effect that shifting the injection signal has over the overall bit agreement rate of the generated key, shown in Figure 8. In the figure, a shifted injection signal does indeed produce higher bit error rates. While there is no way for us to reliably time-align the injection signal with the algorithm's grid, our data shows us that the worst case bit error rate is still below 30%—low enough for pairing to succeed. The injection attack can still succeed even if the injected signal is out of phase with the grid.

C. Generated Key Entropy

While the injection signal can produce a mostly predictable set of bits for the legitimate devices key, it raises the question if the a legitimate device can detect the attack taking place through observing the apparent predictability of its generated keys. Using the 95 dBA injection signal from our testbed experiment, we generated 12,300 bits to calculate the entropy of the generated keys. The entropy was calculated using symbols of size 8 bits. The calculated entropy from the bits came to **~7 bits of entropy**. Hence, we conclude that the attack is difficult to detect from key entropy, as the entropy is not suspiciously low.

V. DISCUSSION & FUTURE WORK

Our attack uses a specially-tailored injection signal to target the Schurmann & Sigg bit quantization algorithm. But we suspect

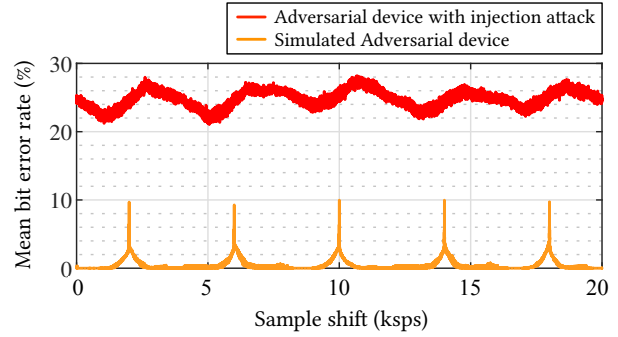


Fig. 8: Plot of bit error rate as a function of shift amount for our injection attack. Shifting the adversary's injection signal relative to the legitimate device's increases bit errors, but the adversary can often still pair.

injection attacks against other ZIPA systems would be successful with other signals that are not tailored to a specific bit quantization algorithm if the amplitude was high enough to overwhelm the context in the legitimate space. For ZIPA systems that use audio as environmental context, a signal injection attack would be obvious to people in the legitimate environment because they will hear the sound being broadcast. In other forms of environmental context like electromagnetic radiation, an injection attack may not be easily detectable. We need some technique to prevent these attacks if ZIPA systems are to be practical.

Devices on a ZIPA network establish their legitimacy from signals measured in a physically-restricted space. The key observation of this work is that it is possible for an external attacker to influence the legitimate environmental context. So ZIPA systems that rely solely on a shared environmental signal are prone to injection attacks.

A. Detecting Injection Attacks

In general, detecting injection attacks against ZIPA networks is a difficult problem and depends on the attacker's strategy.

- **Anomaly Detection:** many techniques exist for detecting signal anomalies [3]. It is possible that some of these techniques could be used to detect signal injection attacks.
- **Online NIST Test for Randomness:** we expect injection attacks to produce bit sequences with relatively low randomness. We did a simple test for entropy, but we did not pass bit sequences through the NIST test [24] because our experiments did not generate enough bits to produce a conclusive result. By continuously evaluating the randomness of bit sequences in real time as they are produced, it may be possible to identify signal injection attacks. This may be challenging because the NIST test codebase is large and not designed to run on low-resource embedded computers that are typically used on ZIPA devices.

B. Mitigation using Impulse Responses

This work demonstrates that it is easy to spoof real-time measurements of ambient environmental signals. We think a mitigation technique for injection attacks would combine properties of the physical space by using an impulse response as context for key generation. As impulse responses don't rely on the ambient environment signals, real-time measurements of these properties cannot be spoofed by a signal injection attack.

We demonstrate this concept with a preliminary experiment. First, we estimated the impulse response of our testbed by playing a

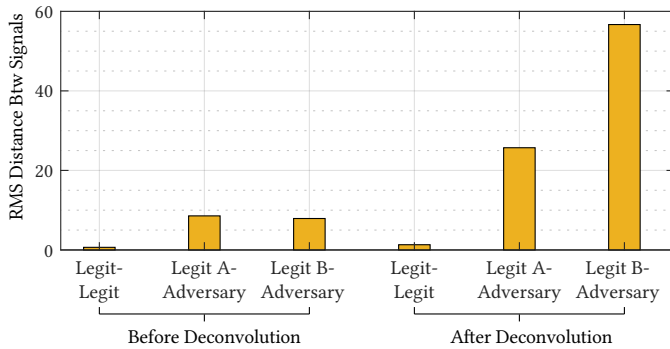


Fig. 9: Deconvolving environmental signal with room impulse response amplifies the difference between legitimate devices and adversaries. Bigger RMS distance between legitimate and adversary is better.

sine sweep [4] on one legitimate device and recording on a nearby legitimate device in the same room. We used the same technique to measure the impulse response between a legitimate device and a distant adversary located in the publicly accessible hallway outside our testbed.

We then synchronously recorded ambient audio (played on the TV in the testbed) on all three devices. As we expected, the recordings of the two legitimate devices were very similar, and the recording of the adversary was slightly different in RMS distance. Figure 9 shows the RMS distance between environmental signals. Deconvolving the room impulse response from the ambient audio recordings substantially amplified differences between the legitimate and adversary devices.

The intuition behind why this deconvolution works is that impulse response estimates generally contain a lot of noise. In our testbed, the building’s HVAC system, computer fans, and other extraneous sounds all add noise to the impulse response, even for a pair of nearby devices. The adversary, located outside the legitimate space, records an impulse response with a very low signal to noise ratio (SNR). Noise in the adversary’s impulse response propagates through the deconvolution to produce a context that is very different from the legitimate device.

VI. CONCLUSION

In this work, we presented the first successful signal injection attack on a ZIPA system to our knowledge. We studied the Schurmann & Sigg algorithm to engineer a signal that made it produce predictable keys when injected into the secured environment. We evaluated our injection signal over simulation and through a live testbed. On our testbed, the attack produces keys that are statistically similar to keys produced by the legitimate devices. To help against this attack we proposed a couple of potential mitigation techniques. We illustrated some preliminary results for a particular mitigation technique based on room impulse responses. The result showed the feasibility of using room impulse responses as a contextual feature for ZIPA systems.

Our attack studies ZIPA systems that produce keys from environmental audio, and it leaves open the question about whether our signal injection attack would be effective against other modes of environmental signal. Future work could study the question of whether injection attacks would be successful against ZIPA systems that use other modes of environmental noise to establish context.

REFERENCES

- [1] Hw-j355 soundbar with subwoofer. <https://www.samsung.com/us/televisions-home-theater/home-theater/sound-bars/hw-j355-soundbar-w-subwoofer-hw-j355-za/>. Accessed: 2023-09-8.
- [2] Solocast - usb gaming microphone. <https://hyperx.com/products/hyperx-solocast-usb-microphone?variant=41031679312029>. Accessed: 2022-06-14.
- [3] Varun Chandola, Arindam Banerjee, and Vipin Kumar. Anomaly detection: A survey. *ACM Comput. Surv.*, 41(3), jul 2009.
- [4] Angelo Farina. Simultaneous measurement of impulse response and distortion with a swept-sine technique. In *Audio engineering society convention 108*. Audio Engineering Society, 2000.
- [5] Earlene Fernandes, Jaeyeon Jung, and Atul Prakash. Security analysis of emerging smart home applications. In *2016 IEEE Symposium on Security and Privacy (SP)*, pages 636–654, 2016.
- [6] Dinei Florencio and Cormac Herley. A large-scale study of web password habits. In *Proceedings of the 16th International Conference on World Wide Web, WWW '07*, page 657–666, New York, NY, USA, 2007. Association for Computing Machinery.
- [7] Mikhail Fomichev, Flor Álvarez, Daniel Steinmetzer, Paul Gardner-Stephen, and Matthias Hollick. Survey and systematization of secure device pairing. *IEEE Communications Surveys & Tutorials*, 20(1):517–550, 2018.
- [8] Nikolaos Karapanos, Claudio Marforio, Claudio Soriente, and Srdjan Capkun. Sound-proof: Usable two-factor authentication based on ambient sound. In *24th USENIX Security Symposium (USENIX Security 15)*, pages 483–498, Washington, D.C., August 2015. USENIX Association.
- [9] Arun Kumar, Nitesh Saxena, Gene Tsudik, and Ersin Uzun. Caveat eptor: A comparative study of secure device pairing methods. In *2009 IEEE International Conference on Pervasive Computing and Communications*, pages 1–10, 2009.
- [10] Kyuin Lee, Neil Klingensmith, Suman Banerjee, and Younghyun Kim. Voltkey: Continuous secret key generation based on power line noise for zero-involvement pairing and authentication. *Proc. ACM Interact. Mob. Wearable Ubiquitous Technol.*, 3(3), sep 2019.
- [11] Kyuin Lee, Neil Klingensmith, Dong He, Suman Banerjee, and Younghyun Kim. Iypair: Context-based fast intra-vehicle device pairing for secure wireless connectivity. In *Proceedings of the 13th ACM Conference on Security and Privacy in Wireless and Mobile Networks, WiSec '20*, page 25–30, New York, NY, USA, 2020. Association for Computing Machinery.
- [12] Kyuin Lee, Yucheng Yang, Omkar Prabhune, Aishwarya Lekshmi Chithra, Jack West, Kassem Fawaz, Neil Klingensmith, Suman Banerjee, and Younghyun Kim. Aerokey: Using ambient electromagnetic radiation for secure and usable wireless device authentication. *Proc. ACM Interact. Mob. Wearable Ubiquitous Technol.*, 6(1), mar 2022.
- [13] Qi Lin, Weitao Xu, Jun Liu, Abdelwahed Khamis, Wen Hu, Mahbub Hassan, and Aruna Seneviratne. H2b: Heartbeat-based secret key generation using piezo vibration sensors. In *Proceedings of the International Conference on Information Processing in Sensor Networks, IPSN '19*, pages 265–276, 2019.
- [14] Suhas Mathur et al. Proximate: Proximity-based secure pairing using ambient wireless signals. In *ACM MobiSys '11*, 2011.
- [15] Markus Miettinen, N. Asokan, Thien Duc Nguyen, Ahmad-Reza Sadeghi, and Majid Sobhani. Context-based zero-interaction pairing and key evolution for advanced personal devices. In *Proceedings of the 2014 ACM SIGSAC Conference on Computer and Communications Security, CCS '14*, page 880–891, New York, NY, USA, 2014. Association for Computing Machinery.
- [16] Markus Miettinen et al. Context-based zero-interaction pairing and key evolution for advanced personal devices. In *ACM CCS '14*, 2014.
- [17] Ngu Nguyen, Stephan Sigg, An Huynh, and Yusheng Ji. Using ambient audio in secure mobile phone communication. In *2012 IEEE International Conference on Pervasive Computing and Communications Workshops*, pages 431–434, 2012.
- [18] Rodrigo Roman, Jianying Zhou, and Javier Lopez. On the features and challenges of security and privacy in distributed internet of things. *Comput. Netw.*, 57(10):2266–2279, jul 2013.
- [19] Masoud Rostami, Ari Juels, and Farinaz Koushanfar. Heart-to-heart (h2h): authentication for implanted medical devices. In *Proceedings of the 2013 ACM SIGSAC conference on Computer & communications security, CCS '13*, pages 1099–1112, New York, NY, USA, 2013. ACM.

- [20] Nitesh Saxena et al. Secure device pairing based on a visual channel (short paper). In *IEEE S&P '06*, 2006.
- [21] Dominik Schürmann and Stephan Sigg. Secure communication based on ambient audio. *IEEE Transactions on Mobile Computing*, 12(2):358–370, Feb 2013.
- [22] Babins Shrestha, Maliheh Shirvanian, Prakash Shrestha, and Nitesh Saxena. The sounds of the phones: Dangers of zero-effort second factor login based on ambient audio. In *Proceedings of the 2016 ACM SIGSAC Conference on Computer and Communications Security, CCS '16*, page 908–919, New York, NY, USA, 2016. Association for Computing Machinery.
- [23] Karim Toubba. Notice of recent security incident. *LastPass Blog*, 2022.
- [24] Meltem Sönmez Turan, Elaine Barker, John Kelsey, Kerry A McKay, Mary L Baish, Mike Boyle, et al. Recommendation for the entropy sources used for random bit generation. *NIST Special Publication*, 800(90B):102, 2018.
- [25] Yinqian Zhang, Fabian Monrose, and Michael K. Reiter. The security of modern password expiration: An algorithmic framework and empirical analysis. In *Proceedings of the 17th ACM Conference on Computer and Communications Security, CCS '10*, page 176–186, New York, NY, USA, 2010. Association for Computing Machinery.
- [26] Wei Zhou, Yan Jia, Yao Yao, Lipeng Zhu, Le Guan, Yuhang Mao, Peng Liu, and Yuqing Zhang. Discovering and understanding the security hazards in the interactions between IoT devices, mobile apps, and clouds on smart home platforms. In *28th USENIX Security Symposium (USENIX Security 19)*, pages 1133–1150, Santa Clara, CA, August 2019. USENIX Association.
- [27] Samira Zibaei, Dinah Rinoa Malapaya, Benjamin Mercier, Amirali Salehi-Abari, and Julie Thorpe. Do password managers nudge secure (random) passwords? In *Eighteenth Symposium on Usable Privacy and Security (SOUPS 2022)*, pages 581–597, Boston, MA, August 2022. USENIX Association.